



## Safety elements



Safety overload valve.  
It prevents the jack from exceeding its nominal capacity.



Hydraulic stroke limiter.  
Hydraulic limit switch that limits excess piston travel in order to prevent its damage.



Operation by the "Deadman" principle  
(stops operation if the user loses control accidentally).



Lowering Control System Device (LCS).  
It acts automatically providing a smooth, even and safe descent of the load, in any circumstances, even if it is due to a sudden and/or accidental opening of the discharge.



Automatic spring return piston.



Manometer.



Extendable screw for fast and precise approach.

**"The bitterness of poor quality remains long after the sweetness of low price is forgotten"**

Benjamin Franklin



Visit the corporate video  
on our Youtube channel



## Presentation

At **MEGA** we have been manufacturing hydraulic lifting equipment and tools for garages, workshops and industry since 1940 with the clear aim of exceeding the expectations of our business partners.

### **“Millions of hydraulic devices manufactured in our facilities work every day around the world”**

We are a company with vast experience in the market, constantly seeking to improve and to provide our users with the best working tools on the market.

MEGA products are used regularly in over 100 countries worldwide by professionals looking for tools and equipment that are passed down from generation to generation, from garage to garage, from site to site, with endless stories and experiences, mostly in the most adverse conditions, and our commitment remains the same: to make our products better every day.

At our premises located in Bérriz since the 1960s, we have been carrying out the entire manufacturing process **in order to offer our customers the best quality and maximum service adaptability.**

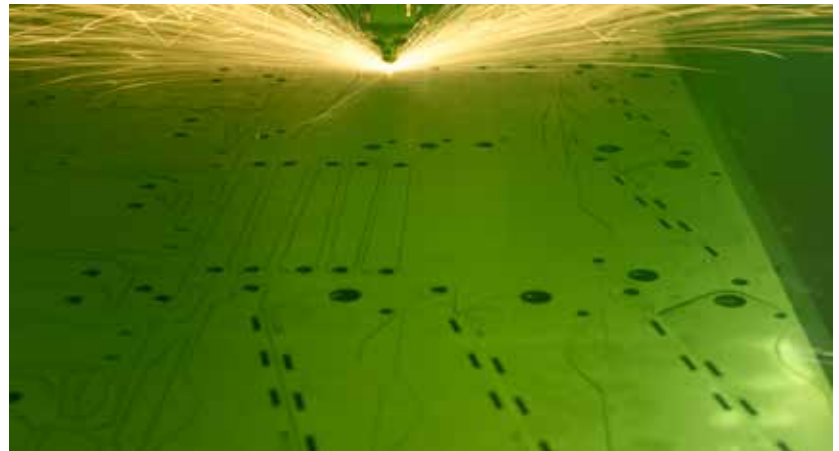
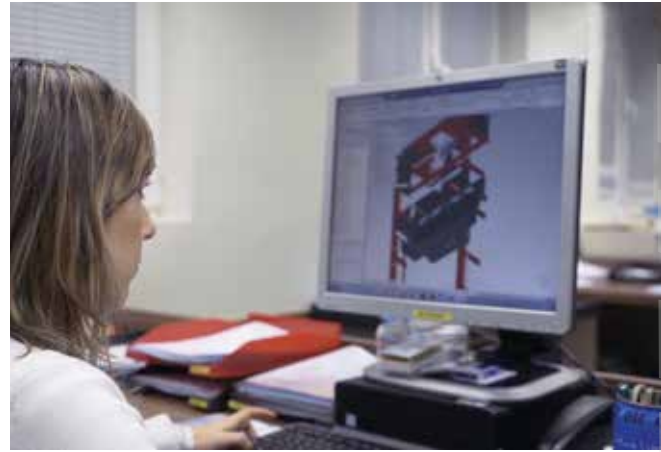
As a sign of our commitment to innovation, we are one of the first companies to implement the *Lean Manufacturing* production system, eliminating all processes and stages that do not contribute to incorporating added value, providing the advantage of creating value where no one else does.

Our constant improvement is not limited to the design or use of **cutting-edge technologies and innovative production techniques in the manufacture of hydraulic lifting equipment, but is also committed mainly to secure safety, on features such as the deadman's system, LCS lowering control system, hydraulic piston stroke limiter and safety overload valve.**

We choose and use the best raw materials on the market for the production of our products, ensuring and guaranteeing maximum durability and resistance in the most unfavourable conditions of use.







**The brand**

**The prestige of a brand cannot be improvised**

With more than 80 years of history, at **MEGA**, we base our reputation on a tradition of quality, credibility and know-how, which is renewed every day, and enriched by generations of professionals committed to surpassing the high quality of our tools and guaranteeing a promising future for the MEGA brand.

**International**

Our equipment is a daily help in the most demanding workshops around the world. A strong commitment to service, a long and solid export history and a serious, transparent and carefully chosen distribution policy, are the keys that explain our recognition and international expansion.

**Sector leader**

We are committed to a sustained and controllable expansion, a balanced growth that does not compromise our quality or the exclusivity of our offer. **Faced with the temptation of diversification**, we are selective. We aim to collaborate with prestigious distributors who share our values and protect our reputation, in an exercise of mutual reinforcement and fair reciprocity.



|                                      |    |
|--------------------------------------|----|
| Trolley jacks.....                   | 6  |
| Heavy duty trolley jacks.....        | 8  |
| Air hydraulic jacks.....             | 10 |
| Air hydraulic bottle jacks.....      | 12 |
| Bottle jacks.....                    | 14 |
| Cranes.....                          | 18 |
| High lift transmission jacks.....    | 21 |
| Presses.....                         | 22 |
| Lifting tables.....                  | 28 |
| Pneumatic table for motorcycles..... | 28 |
| Wheel dolly.....                     | 29 |
| Transmission jack.....               | 29 |
| Body repair kits.....                | 30 |
| Body aligning set.....               | 31 |
| Hydraulic pipe benders.....          | 32 |
| Axle stands.....                     | 32 |
| Jack exhibitor.....                  | 33 |
| Index of references.....             | 34 |

## Trolley jacks GT

### New family of fully redesigned and improved GT trolley jacks

Main characteristics:

- **Safety system**, operation by the deadman's principle. Stopping the operation if the user accidentally loses control.
- **New metal pedal**. Equipped with a fast approach pedal, fewer pumps, reduces effort and time.
- **Wider width between the rear wheels**, providing greater load stability and easy jacking.
- **Reinforced structure**, double sheet welded in high resistance steel.
- **Bigger wheels**, offer better stability on uneven ground. Made of polyamide for a lower noise level.
- **Tool tray integrated in chassis**.
- **Oversized support platform** with rubber pad, offers greater contact with the load.



AVAILABLE  
IN GREY



BUREAU  
VERITAS  
EN 1494



Safety overload valve.



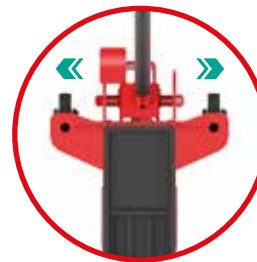
LCS lowering control system.



Hydraulic stroke limiter.



Operation by "dead man's" principle.



Larger width between wheels.  
High load stability.



Rubber pad included.



**GT3** – 3t jack designed for lifting cars and vans.



Minimum height  
**95 mm.**

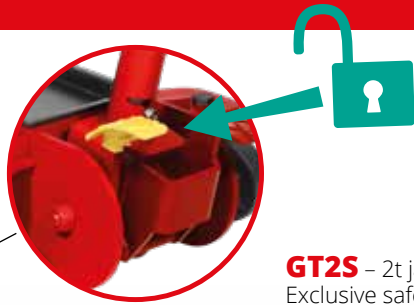


**GT4** – 4t jack specially designed for lifting commercial vehicles, SUVs and off-road vehicles.



Minimum height  
**140 mm.**





**GT2S** – 2t jack equipped with mechanical lowering lock. Exclusive safety system that prevents the accidental lowering of the load by locking it at 320mm from the floor. Yellow pedal for unlocking the system.



Minimum height  
**95 mm.**



**EXTRA LOW PROFILE**

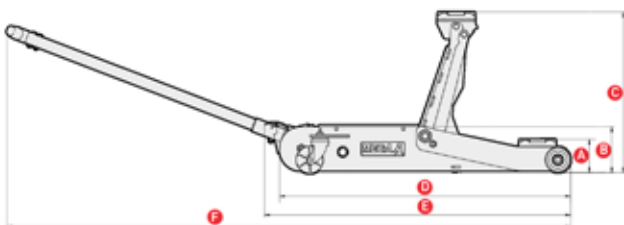
Minimum height  
**70 mm.**

**GT2X** – Ultra Low-profile jack, specially designed for lifting sport vehicles or reduced height.

**GT2** – 2t jack designed for lifting cars and vans.



Minimum height  
**95 mm.**



| Capacity (t) | 2          | 2           | 2           | 3          | 4          |
|--------------|------------|-------------|-------------|------------|------------|
| <b>A</b>     | 95         | 95          | 70          | 95         | 140        |
| <b>B</b>     | 135        | 135         | 135         | 135        | 192        |
| <b>C</b>     | 470        | 470         | 450         | 470        | 530        |
| <b>D</b>     | 850        | 850         | 850         | 850        | 1075       |
| <b>E</b>     | 900        | 900         | 900         | 900        | 1125       |
| <b>F</b>     | 1610       | 1610        | 1640        | 1650       | 1910       |
| <b>G</b>     | 360        | 360         | 360         | 360        | 360        |
| <b>H</b>     | 257        | 257         | 253         | 257        | 260        |
| Weight (kg)  | 35         | 37.5        | 39          | 36         | 48.5       |
| References   | <b>GT2</b> | <b>GT2S</b> | <b>GT2X</b> | <b>GT3</b> | <b>GT4</b> |

Measurements in mm.



## Heavy duty trolley jacks T

Suitable for all types of vehicles, from cars to industrial vehicles. Essential in truck fleets, bus company garages and agricultural machinery maintenance garages. The heaviest models have big wheels located in the centre of the chassis for better handling. Optimum use and distribution of material thanks to the rear side openings and front side reinforcements.



AVAILABLE  
IN GREY



BUREAU  
VERITAS

EN 1494



T6 model handle.



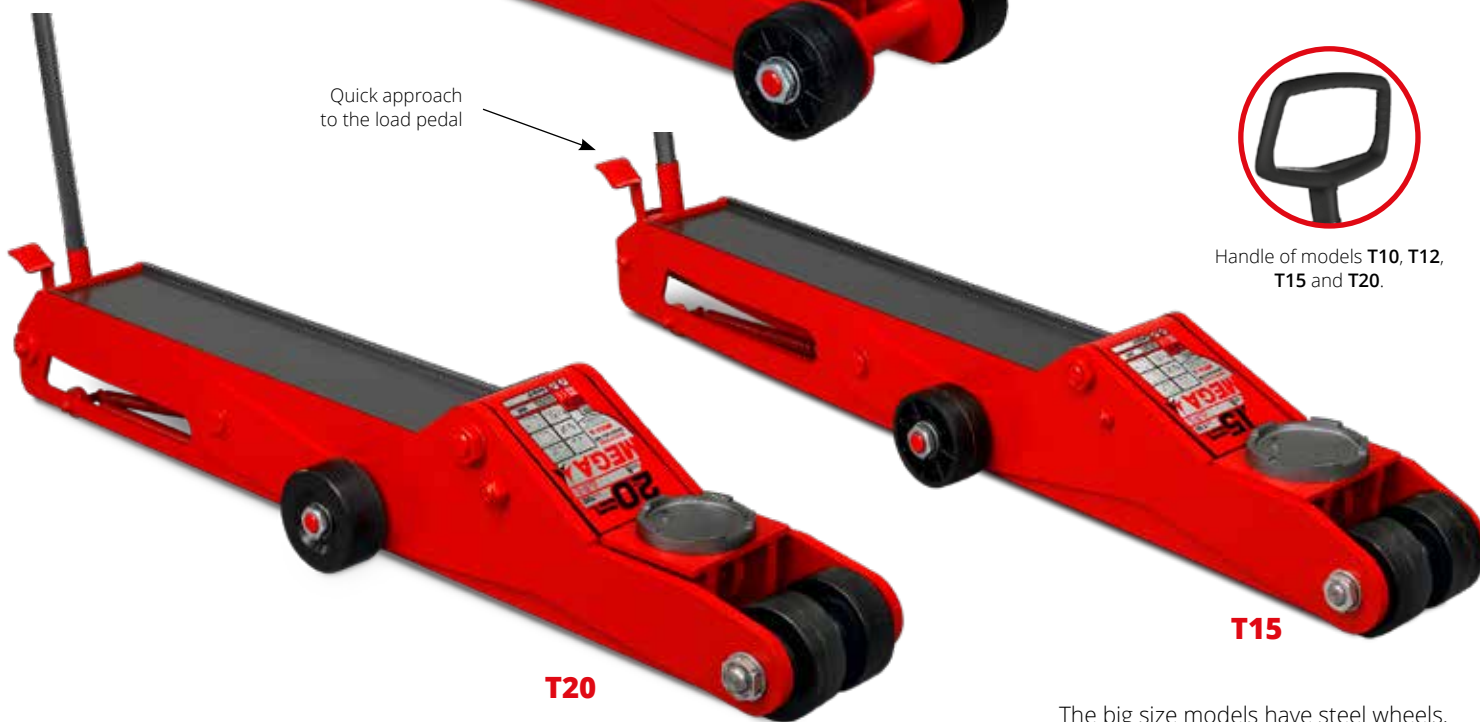
**T10**

**T6**

Quick approach  
to the load pedal



Handle of models T10, T12,  
T15 and T20.



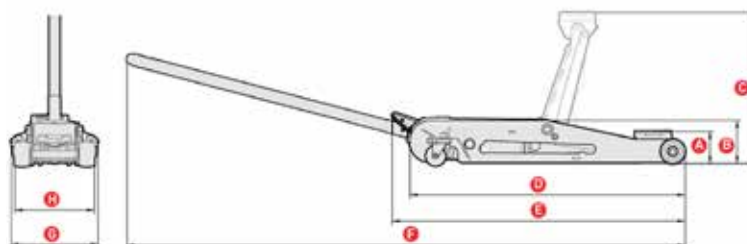
**T20**

**T15**

The big size models have steel wheels.

| Capacity (t) | 6         | 10         | 15         | 20         |
|--------------|-----------|------------|------------|------------|
| <b>A</b>     | 170       | 170        | 195        | 200        |
| <b>B</b>     | 220       | 270        | 265        | 310        |
| <b>C</b>     | 580       | 605        | 600        | 615        |
| <b>D</b>     | 1250      | 1535       | 1575       | 1585       |
| <b>E</b>     | 1310      | 1600       | 1750       | 1777       |
| <b>F</b>     | 2215      | 2530       | 2680       | 2707       |
| <b>G</b>     | 414       | 414        | 375        | 415        |
| <b>H</b>     | 336       | 386        | 255        | 302        |
| Weight (kg)  | 81        | 120.5      | 145        | 234.5      |
| References   | <b>T6</b> | <b>T10</b> | <b>T15</b> | <b>T20</b> |

Measurements in mm.





## Air hydraulic jacks for heavy vehicles N

Specially designed to work on heavy vehicles, assistance, tire and bodywork workshops. Highest quality steel. Their chrome molybdenum vanadium composition, strengthened by an anti-corrosion and anti-seize treatment through salt bath nitriding provides the jacks unbeatable resistance and durability properties. Modular concept. The independent modular construction design - lifting block, valve unit, pump motor, release cylinder and tank, simplifies assembly and makes maintenance easier. High approach speed and efficient load lifting. Keeps high the load even if the air supply is interrupted. Recommended working pressure between **6 and 8 bar**.



AVAILABLE  
IN GREY



Safety overload valve.



LCS Lowering Control System.



Hydraulic stroke limiter.



Operation by "dead man's" principle.



**N15-2B**



Minimum height  
**150 mm.**



**N10-3**



Minimum height  
**125 mm.**



**N15-2**



Minimum height  
**185 mm.**



**N15-4**



Minimum height  
**155 mm.**

### Optional accessories

**A-5206**



L= 50 mm.

N15-2B  
N15-2  
N15-4  
N20-3  
N25

**A-5205**



L= 100 mm.

N10-3





Single control switch.  
Handy and easy to use.

415 mm. / 20t. —  
334 mm. / 35t. —  
258 mm. / 65t. —



Minimum height  
**180 mm.**

**N20-3**



Rotating handle on models that,  
due to their size and weight, can  
be transported by hand.

323 mm. / 25t. —



Minimum height  
**215 mm.**

**N25**

Accessories included

**A-5211**

**A-5212**



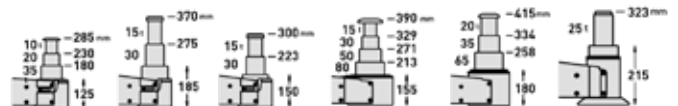
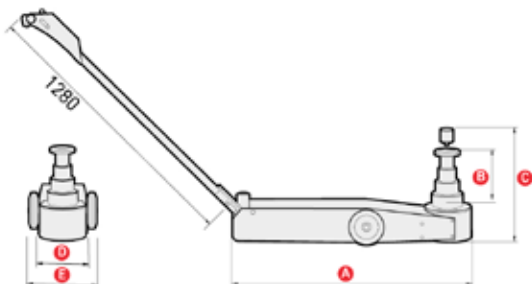
L= 60 mm.

**N10-3**



L= 100 mm.

**N15-2B N15-4**  
**N15-2 N20-3**  
**NP15-2B N25**



| Capacity (t) | 10-20-35     | 15-30        | 15-30         | 15-30-50-80  | 20-35-65     | 25         |
|--------------|--------------|--------------|---------------|--------------|--------------|------------|
| <b>A</b>     | 807          | 807          | 807           | 810          | 793          | 560        |
| <b>B</b>     | 160          | 185          | 150           | 235          | 235          | 108        |
| <b>C</b>     | 345          | 470          | 400           | 490          | 515          | 423        |
| <b>D</b>     | 157          | 157          | 157           | 212          | 194          | 157        |
| <b>E</b>     | 260          | 280          | 280           | 317          | 317          | 280        |
| Weight (kg)  | 41           | 46.5         | 43.5          | 70.5         | 69.5         | 47         |
| References   | <b>N10-3</b> | <b>N15-2</b> | <b>N15-2B</b> | <b>N15-4</b> | <b>N20-3</b> | <b>N25</b> |

Measurements in mm.



Look at the instructions  
on our Youtube channel

## Portable air hydraulic jack NP



Compact and lightweight design makes it perfect for heavy-duty roadside assistance. Reduced chassis width for positioning under the lifting point in areas of difficult access. It can be used with the vehicle's own compressor and be carried on board without occupying much space due to its small size (the jacks can lift the nominal load with the extra extension).



**AVAILABLE  
IN GREY**



**BUREAU  
VERITAS**  
EN 1494



Safety overload valve.



LCS Lowering Control System.



Hydraulic stroke limiter.



Operation by the "dead man's" principle.



The telescopic handle locks in three positions:  
**A** and **B** for transport and  
**C** position for working.



**You  
Tube**

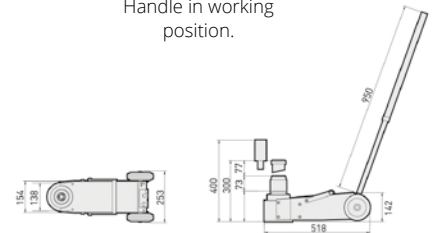
Includes extra  
extension 100 mm.  
ref. **A-5212**.



**NP15-2B**



Handle in working  
position.



Minimum height  
**150 mm.**

| Ref.           | Capacity (t) | Kg        |
|----------------|--------------|-----------|
| <b>NP15-2B</b> | <b>15-30</b> | <b>31</b> |

## Air hydraulic bottle jack BRB



They are very compact models. Their monobloc -integrated tank- and welded construction reduces their dimensions and makes transportation easier. Ideal for roadside assistance. All models have an extension screw for a fast load approach, a high-performance remote-operated air pump and a salt bath nitriding hardened piston that ensures a long working life.



**AVAILABLE  
IN GREY**

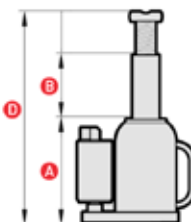


**BUREAU  
VERITAS**

Conforms to the standard:  
American ASME PASS

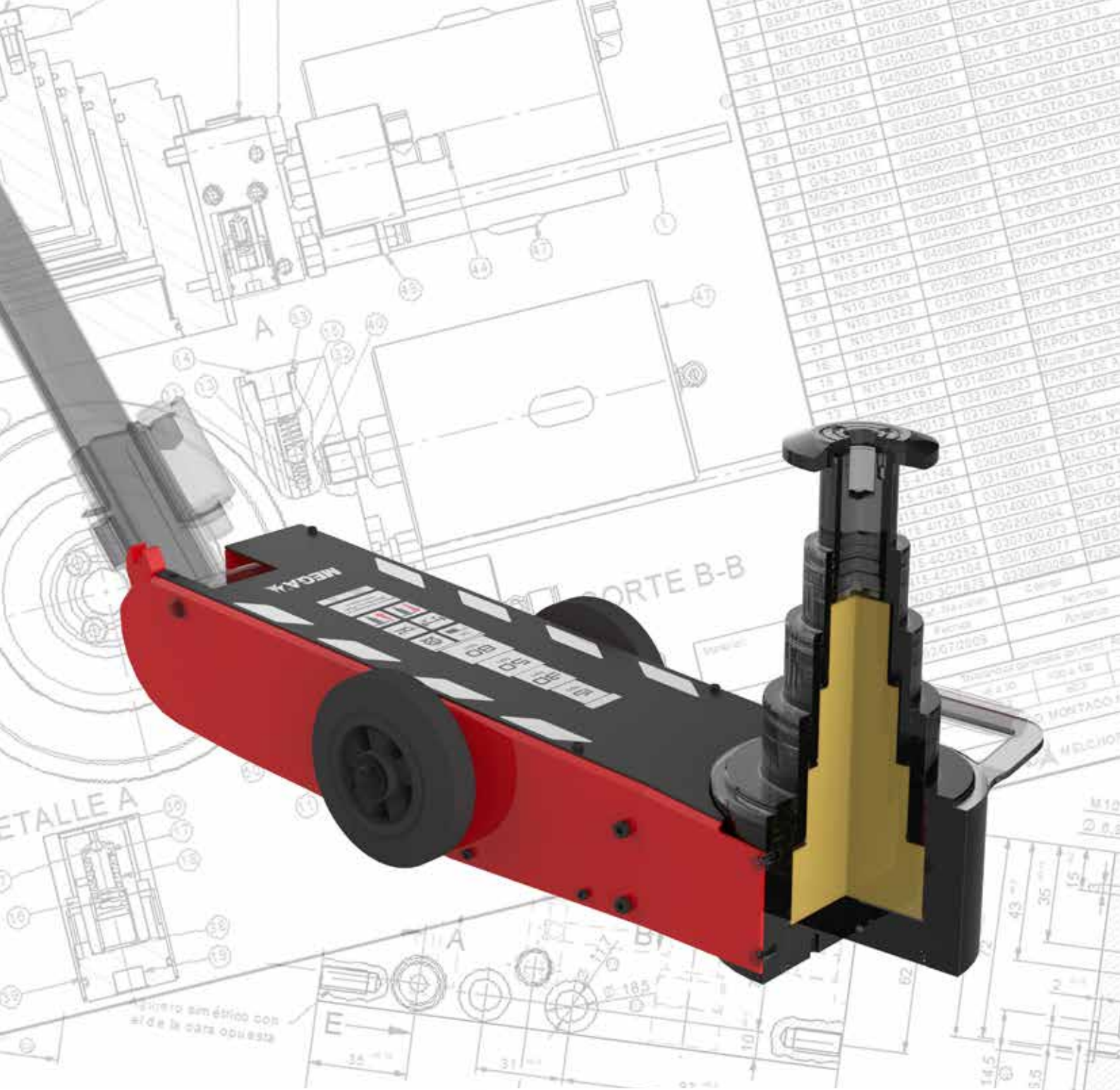


Swivel handle accessible in any  
position and rotating carrying handle.



| Capacity (t)       | 20                  | 30           |
|--------------------|---------------------|--------------|
| <b>A</b>           | 234                 | 242          |
| <b>B</b>           | 138                 | 138          |
| <b>C</b>           | 75                  | 75           |
| <b>D</b>           | 447                 | 455          |
| Weight (kg)        | 15.5                | 20           |
| Air pressure       | 7 bar / 100 psi     |              |
| Necessary air flow | 270 l/min / 9.5 clm |              |
| Reference          | <b>BRB20</b>        | <b>BRB30</b> |


Measurements in mm.






## Bottle jacks 3 – 10 t BR

Equipped with a unique rotatory pump socket system which can be operated from any position. All models have an extension screw for fast load approach. The base and bottle body are welded, providing greater durability, stability and safety in use. Telescopic zinc-plated handle, easy to store. Adequate length to ensure moderate pumping effort.

 Safety overload valve. 5t upwards.

 Hydraulic stroke limiter.



AVAILABLE  
IN GREY



**BUREAU  
VERITAS**

EN 1494

Conforms to the standard:  
American ASME PASE  
CE official certification

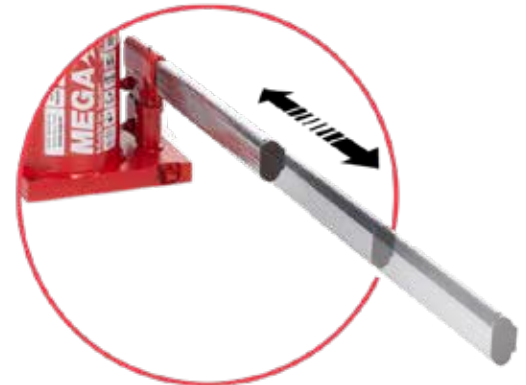


**BR3**



Extension screw  
for longer travel.

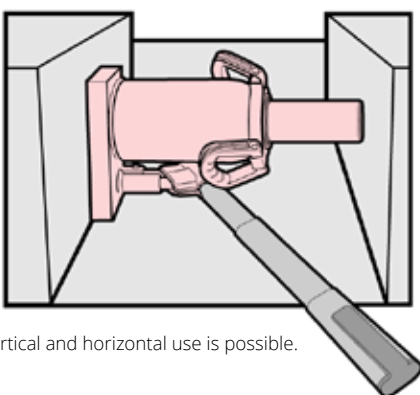
**BR5**



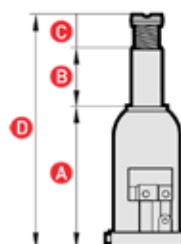
Zinc-plated telescopic handle.



**BR10**



Vertical and horizontal use is possible.



| Capacity (t) | 3          | 5          | 10          |
|--------------|------------|------------|-------------|
| <b>A</b>     | 168        | 212        | 219         |
| <b>B</b>     | 105        | 150        | 150         |
| <b>C</b>     | 65         | 75         | 75          |
| <b>D</b>     | 338        | 437        | 444         |
| Weight (kg)  | 3.7        | 4.5        | 6.4         |
| References   | <b>BR3</b> | <b>BR5</b> | <b>BR10</b> |

Measurements in mm.



## Bottle jacks 12 – 100 t **BR** and **MGD**

Heavy duty hydraulic jacks designed and tested for high performance work. Models from 20t upwards are equipped with a rotating carrying handle and an integrated support to place the telescopic handle and facilitate storage. Equipped with a unique rotating pump system which can be operated in any position. All models have an extension screw for a fast approach to the load. The welded base and body of the bottle provides greater stability and safety. Zinc-plated telescopic handle easy to store. Length suitable for moderate pumping effort.



AVAILABLE IN GREY



Safety overload valve.



Hydraulic stroke limiter.



**BR50**



Rotating carrying handle.  
Rotating transport handle  
Where the Jack lever is housed as  
from the 20 ton model.



**BR30**

Extension screw  
for longer travel

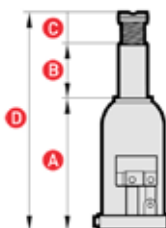


**MGD-100**



Rotary pump socket.

The **MGD-100** model is equipped with pressure gauge and has two pumps (approach and operation).



| Capacity (t)    | 15          | 20          | 30          | 40          | 50          | 100            |
|-----------------|-------------|-------------|-------------|-------------|-------------|----------------|
| <b>A</b>        | 228         | 234         | 242         | 246         | 260         | 300            |
| <b>B</b>        | 150         | 150         | 150         | 150         | 140         | 150            |
| <b>C</b>        | 75          | 75          | 75          | -           | -           | -              |
| <b>D</b>        | 453         | 459         | 467         | 396         | 400         | 450            |
| Carrying handle | -           | •           | •           | •           | •           | •              |
| Weight (kg)     | 8.8         | 10.6        | 14.5        | 22.5        | 27          | 87             |
| References      | <b>BR15</b> | <b>BR20</b> | <b>BR30</b> | <b>BR40</b> | <b>BR50</b> | <b>MGD-100</b> |

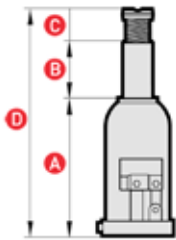
Measurements in mm.

### Low profile bottle jacks **BRS**

Designed for special applications, to access very small spaces which cannot be reached with a standard jack.  
Equipped with a unique rotating pump system accessible in any position.  
All models have an extension screw for fast load approach.



AVAILABLE  
IN GREY



| Capacity (t) | 10           | 20           |
|--------------|--------------|--------------|
| <b>A</b>     | 131          | 190          |
| <b>B</b>     | 62           | 105          |
| <b>C</b>     | 30           | 55           |
| <b>D</b>     | 223          | 350          |
| Weight (kg)  | 5            | 9.5          |
| References   | <b>BRS10</b> | <b>BRS20</b> |

Measurements in mm.



**BRS10**

### Telescopic bottle jacks **BRT**

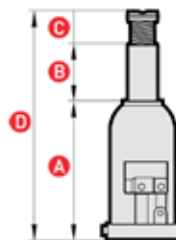
Design that combines a low minimum height with a long lifting range thanks to its two telescopic pistons.  
Equipped with a unique rotating pump system accessible in any position.



AVAILABLE  
IN GREY



**BRT12**



| Capacity (t) | 12           | 20           |
|--------------|--------------|--------------|
| <b>A</b>     | 245          | 180          |
| <b>B</b>     | 326          | 205          |
| <b>C</b>     | -            | -            |
| <b>D</b>     | 571          | 385          |
| Weight (kg)  | 15.4         | 22           |
| References   | <b>BRT12</b> | <b>BRT20</b> |

Measurements in mm.

### Toe jack **MGL**

Designed for the safe lifting of very low and difficult to handle elements.  
Ideal for forklift maintenance, lifting of heavy machinery.  
The lifting claw is removable and adjustable in two positions.



**BL10**

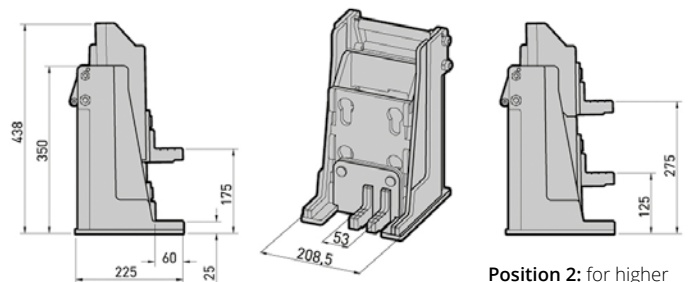


Extra low lifting  
claw (25 mm)



**MGL10**

**BL10 + BR10 = MGL10**  
CHASSIS BOTTLE PRODUCT



**Position 2:** for higher  
lifting points.





Melchor Gabillondo S.A.  
48240 Berriz - Spain  
www.mega.es

REF:  
BR20

20 ton

**MEGA**<sup>®</sup>

Made in Spain

Since 1940

- ANSI PAID
- CE
- OIL
- SAFETY
- STEEL
- HYDRAULIC
- WHEEL

## Parallel legs folding cranes CRP

The CRP models are strong and robust cranes with parallel legs designed to house a pallet under the arm that allows safely placing the load on the pallet. Fitted with two handles and a new tilting system consisting of 4 wheels at the back and 2 at the front, they are very easy to handle and move, both with and without load.



AVAILABLE IN GREY



**BUREAU VERITAS**

CE official certification



Safety overload valve.



LCS Lowering Control System.



Hydraulic stroke limiter.



Operation by the "dead man's" principle.



Swivel hydraulic unit for use in different positions. It incorporates a knob with an extremely precise lowering control.



Tonnage indicator. Push button for automatic arm position change. **Patented.**



Crane swings on swivel wheels. Front wheels do not touch the ground when crane is not loaded. Maximum manoeuvrability. **Patented.**

**CRP20**

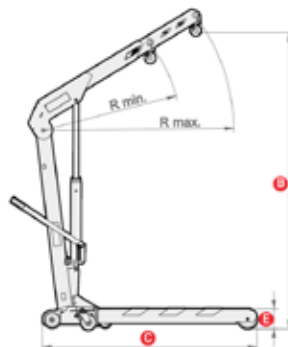
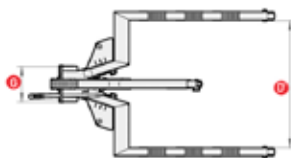


Plastic protections that prevent possible damage to vehicles and serve as a safety warning due to their excellent visibility.

The pedal makes it easier to manoeuvre the crane when it is empty. **Patented.**

Compact design is perfect for storage in small spaces.

All models are equipped with polyamide wheels that facilitate manoeuvrability, do not damage the garage floor, do not rust and are very silent.



| Capacity (kg)      | 1000         | 2000         |
|--------------------|--------------|--------------|
| <b>A</b>           | 1580         | 1740         |
| <b>B</b>           | 2200         | 2460         |
| <b>C</b>           | 1480         | 1800         |
| <b>D</b>           | 870          | 1070         |
| <b>E</b>           | 122          | 170          |
| <b>R minimum</b>   | 960          | 1200         |
| <b>R maximum</b>   | 1300         | 1610         |
| <b>F</b>           | 620          | 740          |
| <b>G</b>           | 300          | 300          |
| <b>H</b>           | 865          | 1050         |
| <b>Weight (kg)</b> | <b>99</b>    | <b>150</b>   |
| <b>References</b>  | <b>CRP10</b> | <b>CRP20</b> |

Measurements in mm.



**BUREAU VERITAS**

CE official certification



## Standard folding cranes CRV

Workshop crane that allows the removal and maintenance of a vehicle's engine so that the entire repair can be carried out in complete safety. MEGA CRV models are strong and robust cranes, specially designed for easy folding and unfolding. Equipped with two handles and a new tilting system with 4 wheels at the back and 2 at the front, very easy to handle and move, both with and without load. Compact design perfect for storing in small spaces. All models are equipped with polyamide wheels that facilitate manoeuvrability, do not damage the garage floor, do not rust and are very silent.



AVAILABLE IN GREY



Safety overload valve.



Operation by the "dead man's" principle.



Hydraulic stroke limiter.



LCS Lowering Control System.

Greater robustness, stability and accessibility thanks to the double legs in the CRV10 and CRV20 models.

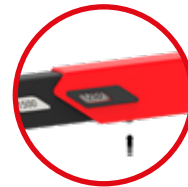


Crane swings on swivel wheels. Front wheels do not touch the ground when crane is not loaded. Maximum manoeuvrability. **Patented.**

Swivel hydraulic unit for use in different positions. It incorporates knob with an extremely precise lowering control.



Tonnage indicator. Push button for automatic arm position change. **Patented.**



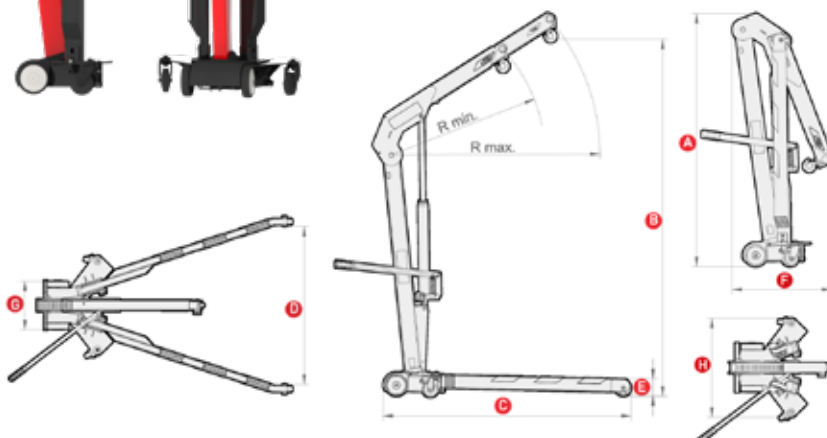
**CRV20**

Compact design is perfect for storage in small spaces.

All models are equipped with polyamide wheels that facilitate manoeuvrability, do not damage the garage floor, do not rust and are very quiet.

Plastic protections that prevent possible damage to vehicles and serve as a safety warning due to their good visibility.

The pedal facilitates manoeuvrability of the empty crane. **Patented.**



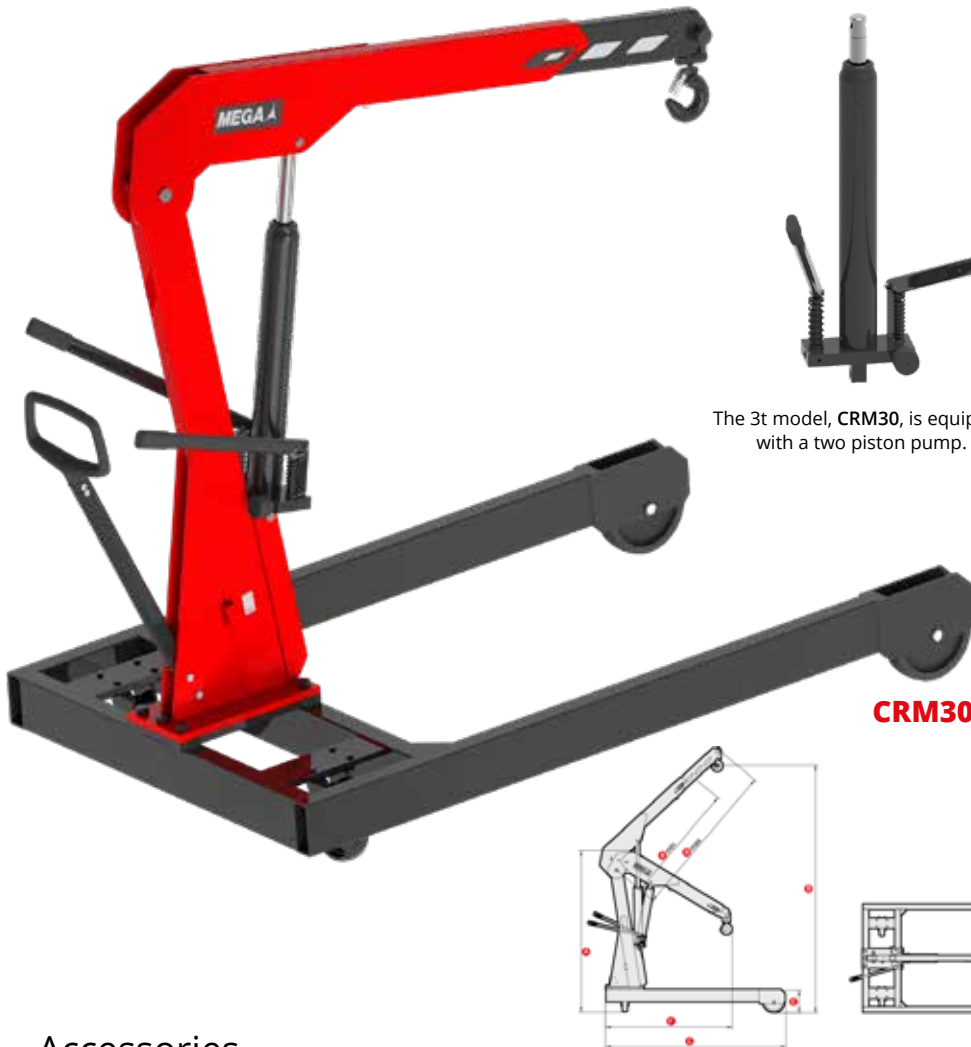
| Capacity (kg)      | 1000         | 2000         |
|--------------------|--------------|--------------|
| <b>A</b>           | 1580         | 1740         |
| <b>B</b>           | 2200         | 2460         |
| <b>C</b>           | 1525         | 1830         |
| <b>D</b>           | 970          | 1100         |
| <b>E</b>           | 112          | 170          |
| <b>R minimum</b>   | 960          | 1200         |
| <b>R maximum</b>   | 1300         | 1610         |
| <b>F</b>           | 615          | 680          |
| <b>G</b>           | 300          | 300          |
| <b>H</b>           | 615          | 725          |
| <b>Weight (kg)</b> | <b>85</b>    | <b>143</b>   |
| <b>References</b>  | <b>CRV10</b> | <b>CRV20</b> |

Measurements in mm.



## High performance crane CRM

The CRM model crane has a reinforced structure, very stable due to its width, making it suitable for safely and reliably operating heavy loads. The design of the extendable and folding arm, allows maximum operator approach.



The 3t model, CRM30, is equipped with a two piston pump.



AVAILABLE IN GREY



**BUREAU VERITAS**  
CE official certification



Safety overload valve.



Hydraulic stroke limiter.



Operation by "deadman's" principle.



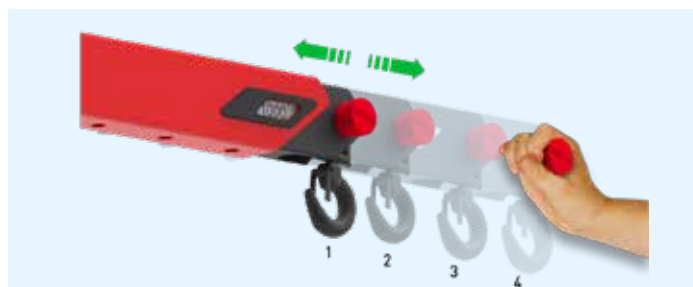
LCS Lowering Control System.

Large polyamide wheels that facilitate manoeuvrability, do not damage the garage floor, do not rust and are very silent.

|                  |              |
|------------------|--------------|
| Capacity (kg)    | 3000         |
| <b>A</b>         | 1919         |
| <b>B</b>         | 2942         |
| <b>C</b>         | 2143         |
| <b>D</b>         | 1126         |
| <b>E</b>         | 268          |
| <b>R</b> minimum | 1430         |
| <b>R</b> maximum | 1880         |
| <b>F</b>         | 1507         |
| Weight (kg)      | 302          |
| References       | <b>CRM30</b> |

Measurements in mm.

## Accessories



The extendable arm changes position with a simple touch of the bottom. Equipped with handle and positioning guiding window that shows the maximum working load. **Patented.**

| Position (kg)      | 1                | 2    | 3    | 4    |
|--------------------|------------------|------|------|------|
| Reference          | Loading capacity |      |      |      |
| <b>CRV10/CRP10</b> | 1000             | 900  | 800  | 700  |
| <b>CRV20/CRP20</b> | 2000             | 1750 | 1500 | 1250 |
| <b>CRM30</b>       | 3000             | 2500 | 2300 | 2100 |

Measurements in mm.



**AB-300**



Drum lifting clamp. For 200 litre steel drums. Only for closed drums with flange or removable top drums, provided the lid is properly closed. **Optional.**



**A-5298**

L = 1 m

Load leveller. **Optional.**

# High lift or under platform transmission jacks TRS

Designed to work in pits or underneath elevated vehicles.  
Lifting and lowering of the load using the foot pedal allow hands to be free.  
Easy manoeuvrability thanks to four swivel castors and a very stable base.  
All controls are pedal-operated.



AVAILABLE  
IN GREY



BUREAU  
VERITAS

EN 1494



Safety overload valve.



LCS Lowering Control System.



Hydraulic stroke limiter.



Operation by the "dead man's" principle.



**TRS750**

Unique jack with two pedal controls.  
Maximum stability, comfort and functionality.

Rubber protections that prevent possible damage to vehicles or crane legs.  
Great safety warning to avoid knocks or tripping thanks to their good visibility.



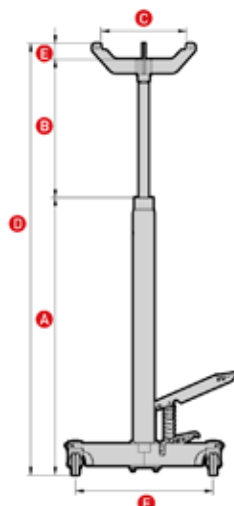
Protective foam block included.  
Patented.



Handle with screws tray,  
adjustable to different positions.

| Capacity (kg) | 300           | 750           | 1200           |
|---------------|---------------|---------------|----------------|
| <b>A</b>      | 1200          | 1110          | 1110           |
| <b>B</b>      | 850           | 820           | 815            |
| <b>C</b>      | 315           | 315           | 315            |
| <b>D</b>      | 2050          | 1930          | 1925           |
| <b>E</b>      | 60            | 60            | 60             |
| <b>F</b>      | 720           | 720           | 720            |
| Weight (kg)   | 26            | 28            | 34             |
| References    | <b>TRS300</b> | <b>TRS750</b> | <b>TRS1200</b> |

Measurements in mm.



## Accessories



**PF350**

Adjustable platform with chains.  
Capacity : 350 kg.  
Optional.

# Workshop column press **PRB** 30 t manual

The compact and reinforced structure guarantees maximum robustness and resistance to stress. Specially designed to save as much space as possible in the workshop. Spring return system cylinder.



AVAILABLE  
IN GREY



**BUREAU  
VERITAS**

CE official  
certification



Safety overload valve.



Hydraulic stroke limiter.



Extendable spindle with fast and precise approach.

Easy access cover for maintenance



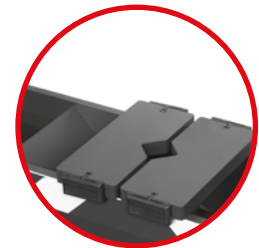
Chassis-integrated pressure gauge



Set of punches.  
Optional.



Extendable screw for a fast and precise approach to the working position.



Reversible V blocks with extraction space with sliding guide for secure fastening. Patented.



Workbench adjustable to different heights

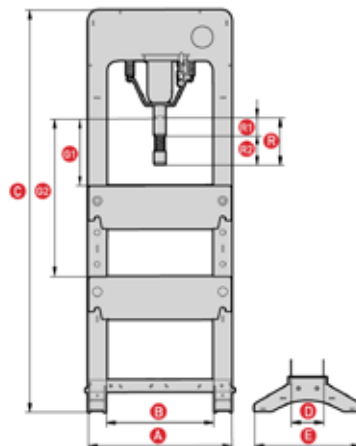


Legs with bolt holes to fix on the floor.



The lower tray can be placed into the workbench. Designed to collect parts, grease, dirt, etc. Patented.

**PRB30**



|                          |              |
|--------------------------|--------------|
| Capacity (t)             | 30           |
| <b>A</b>                 | 670          |
| <b>B</b>                 | 530          |
| <b>C</b>                 | 1850         |
| <b>D</b>                 | 132          |
| <b>E</b>                 | 488          |
| <b>G1</b> minimum        | 53           |
| <b>G2</b> maximum        | 740          |
| <b>R1</b> run            | 150          |
| <b>R2</b> spindle stroke | 75           |
| <b>R</b> total run       | 225          |
| Weight (kg)              | 104          |
| References               | <b>PRB30</b> |

Measurements in mm.

See optional accessories on page 27



# Compact press with cylinder PRC

## Manual or pneumatic 30/50 t

Functional and compact design, ideal for workshops and garages with limited space. Hydraulic press equipped with a piston that allows more working space.



AVAILABLE IN GREY



BUREAU VERITAS

CE official certification



-  Safety overload valve.
-  Hydraulic stroke limiter.
-  Piston with automatic return.
-  Extendable screw for fast and precise approach.



The manual model includes two levers: approach and operation.

Easy access cover for maintenance

Integrated pressure gauge on the chassis

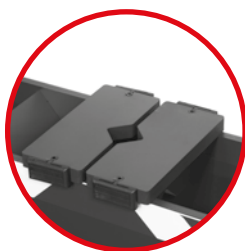


Set of punches  
Optional.

Workbench adjustable to different heights



Extendable screw for a fast and precise approach to the working position.



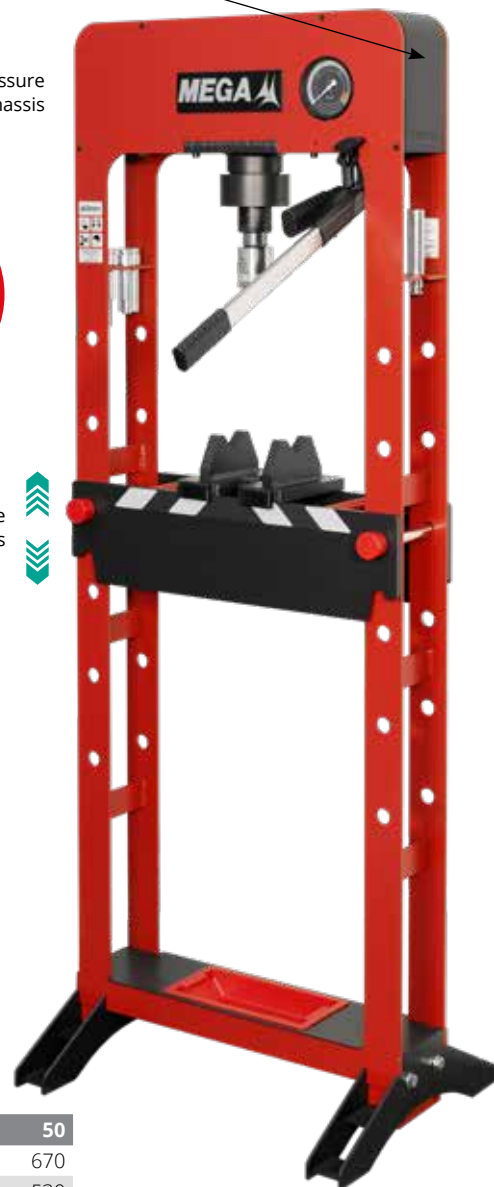
Reversible V blocks with extraction space with sliding guide for secure fastening. **Patented.**



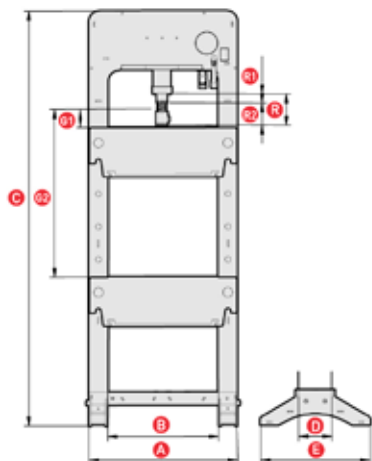
The tray can be placed into workbench. Designed to collect parts, oil, grease, dirt. **Patented.**



New pneumatic pedal on NF models.



**PRC30**



|                                | Capacity (t) | 30             | 50             |
|--------------------------------|--------------|----------------|----------------|
| <b>A</b>                       |              | 670            | 670            |
| <b>B</b>                       |              | 530            | 530            |
| <b>C</b>                       |              | 1850           | 1850           |
| <b>D</b>                       |              | 132            | 132            |
| <b>E</b>                       |              | 488            | 488            |
| <b>G1</b> minimum              |              | 17             | 66             |
| <b>G2</b> maximum              |              | 854            | 766            |
| <b>R1</b> run                  |              | 120            | 120            |
| <b>R2</b> spindle stroke       |              | 75             | 75             |
| <b>R</b> total run             |              | 195            | 195            |
| <b>Weight (kg)</b>             |              | <b>112</b>     | <b>145</b>     |
| <b>References</b>              |              |                |                |
| Double hand pump               |              | <b>PRC30</b>   | <b>PRC50</b>   |
| Manual and pneumatic foot pump |              | <b>PRC30NF</b> | <b>PRC50NF</b> |



Legs with bolt holes to fix on the floor.

See optional accessories on page 27

Measurements in mm.

# Robust press with sliding cylinder PRD

## Manual or pneumatic 30/50 t

Robust design with wider chassis for easier handling in the working area. Integrates all hydraulic elements within the chassis, protecting them and saving space in the workshop.



AVAILABLE  
IN GREY



**BUREAU  
VERITAS**

CE official  
certification



Safety overload valve.



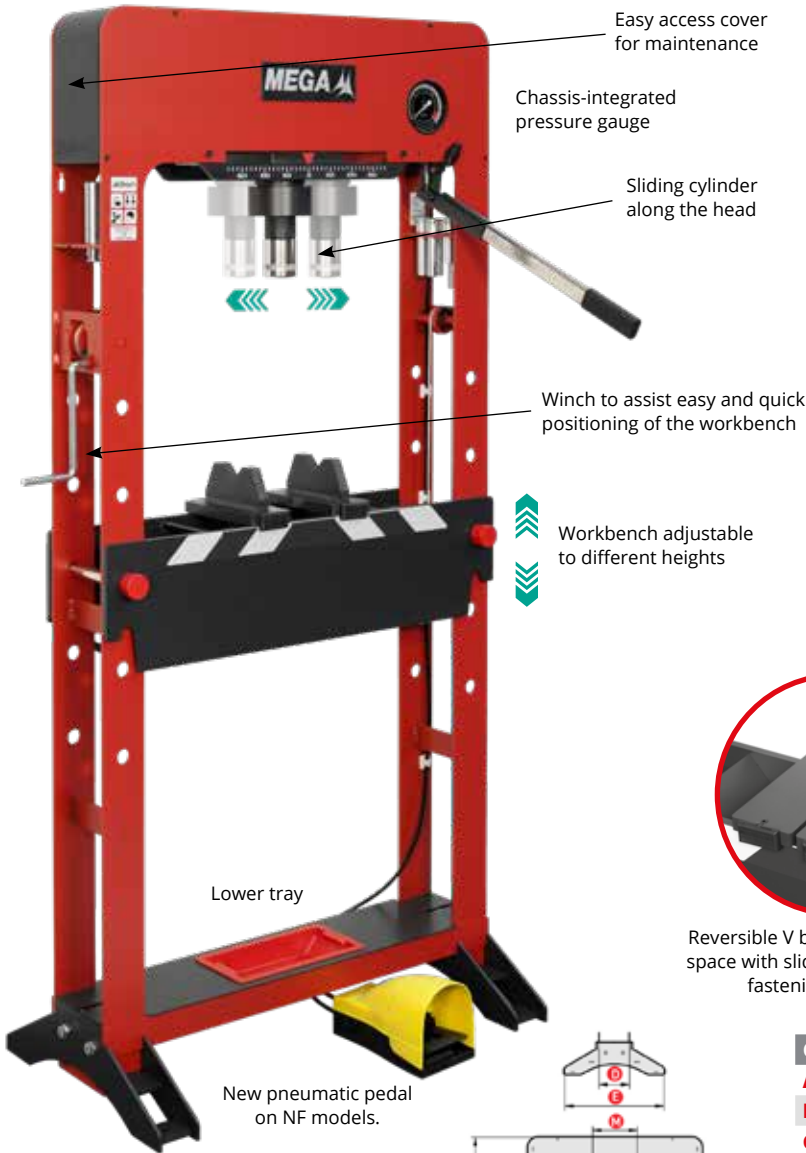
Hydraulic stroke limiter.



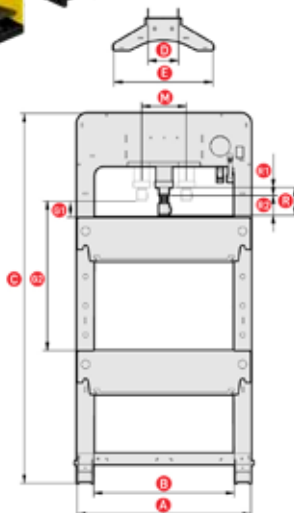
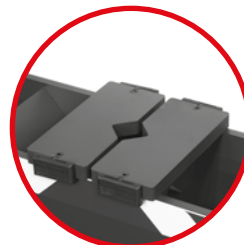
Piston with automatic return.



Extendable screw for fast and precise approach.



**PRD30NF**



| Capacity (t)             | 30         | 50         |
|--------------------------|------------|------------|
| <b>A</b>                 | 890        | 890        |
| <b>B</b>                 | 720        | 720        |
| <b>C</b>                 | 1900       | 1900       |
| <b>D</b>                 | 150        | 150        |
| <b>E</b>                 | 490        | 490        |
| <b>G1</b> minimum        | 84         | 84         |
| <b>G2</b> maximum        | 770        | 770        |
| <b>R1</b> run            | 120        | 120        |
| <b>R2</b> spindle stroke | 75         | 75         |
| <b>R</b> total run       | 195        | 195        |
| <b>M</b> lateral run     | 212        | 189        |
| <b>Weight (kg)</b>       | <b>147</b> | <b>191</b> |

References  
 Double hand pump **PRD30**  
 Manual and pneumatic foot pump **PRD30NF** **PRD50**  
**PRD50NF**

Measurements in mm.

See optional accessories on page 27

## Premium PRP press "Hands-free" pneumatic 50 ton

The most complete premium press on the market, equipped with all the accessories as standard. Its special design with the operation and discharge controls on the pedals, allows the operator to free his hands, facilitating his work in the fast and precise positioning of the element in the press.  
Larger chassis width for easier handling in the working area.



AVAILABLE  
IN GREY



BUREAU  
VERITAS

CE official  
certification



Safety overload valve.



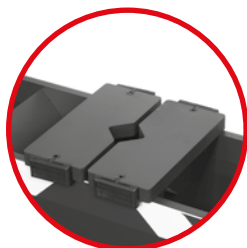
Piston with automatic return.



Hydraulic stroke limiter.



Extendable screw for fast and precise approach.



Reversible V blocks with extraction space with sliding guide for secure fastening. **Patented.**



Bottom tray designed to collect parts, oil, grease, dirt. It can also be placed on the central work table. **Patented.**

Easy access cover for maintenance

Integrated pressure gauge on the chassis

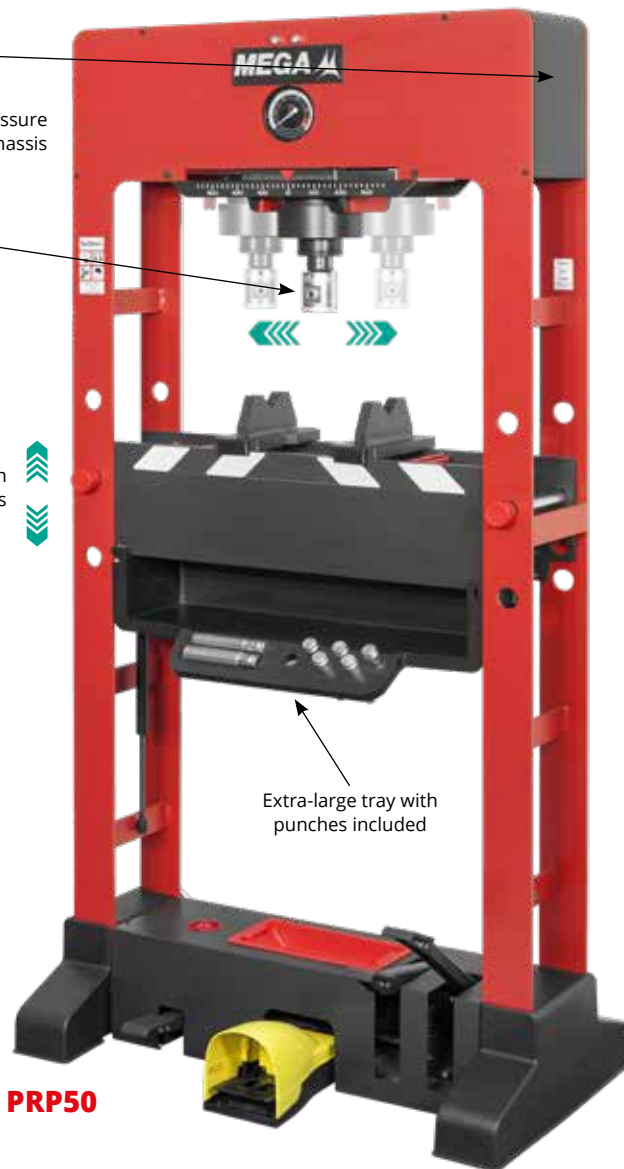
Sliding cylinder along the head

Adjustable workbench at different heights

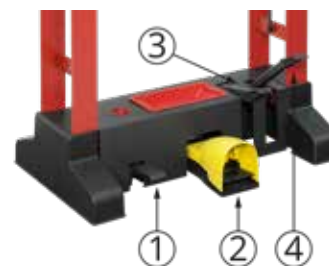
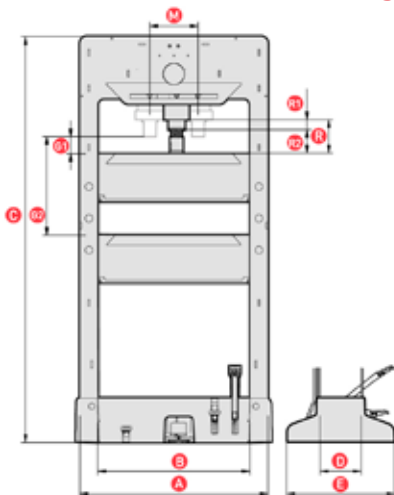


Extendable screw for a fast and precise approach to the working position.

Presses prepared for fixing on the ground.



**PRP50**



1. Release pedal.
2. Pneumatic operation pedal.
3. Fast approach pedal.
4. Pressure pedal.

|                          |              |
|--------------------------|--------------|
| Capacity (t)             | <b>50</b>    |
| <b>A</b>                 | 890          |
| <b>B</b>                 | 720          |
| <b>C</b>                 | 1920         |
| <b>D</b>                 | 195          |
| <b>E</b>                 | 490          |
| <b>G1</b> minimum        | 80           |
| <b>G2</b> maximum        | 465          |
| <b>R1</b> run            | 120          |
| <b>R2</b> spindle stroke | 75           |
| <b>R</b> total run       | 195          |
| <b>R</b> lateral run     | 229          |
| <b>Weight (kg)</b>       | <b>225</b>   |
| <b>References</b>        | <b>PRP50</b> |

Measurements in mm.

See optional accessories on page 27



## Large tonnage press K Manual or electric

Professional use press with double-acting cylinder, especially recommended for garages, repair shops and industrial maintenance.  
Robust construction designed for precise operation when extracting, bending, straightening, pressing, etc.  
Solid structure with a front width of 1200mm and a workbench easily adjustable with a winch that can be set at 5 different heights.  
Included set of 2 V-blocks with sliding guide and extraction space.



**AVAILABLE  
IN GREY**



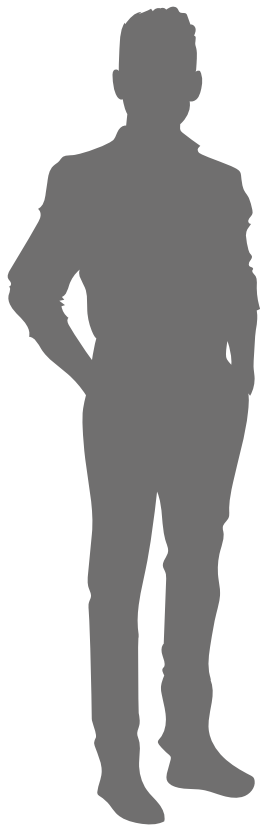
Safety overload valve.



Hydraulic stroke limiter.



Piston with automatic return.



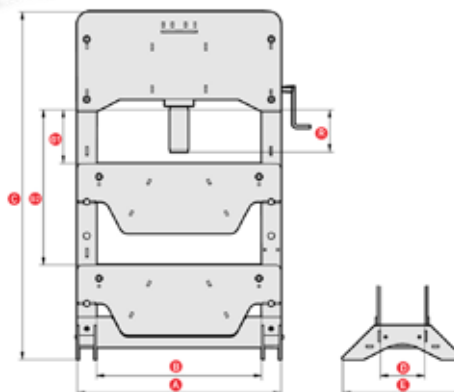
**K100**

Two pump options:

- **K100E:** Press with double-stage electric pump with 1400 rpm asynchronous motor. Three-phase 230/380V motor with electrical circuit breaker for automatic opening of the power. Double-acting distributor. Equipped with magneto-thermal switch and direct oil level sight glass.
- **K100:** Manual operation, with double acting pump, one approach speed and a more powerful second speed for more efficient work.



Electric pump model **K100E**.







|                    |              |
|--------------------|--------------|
| Capacity (t)       | <b>100</b>   |
| <b>A</b>           | 1200         |
| <b>B</b>           | 975          |
| <b>C</b>           | 2050         |
| <b>D</b>           | 260          |
| <b>E</b>           | 715          |
| <b>G1</b> minimum  | 115          |
| <b>G2</b> maximum  | 915          |
| <b>R</b> total run | 250          |
| Weight (kg)        | <b>620</b>   |
| References         |              |
| With hand pump     | <b>K100</b>  |
| With electric pump | <b>K100E</b> |

Measurements in mm.

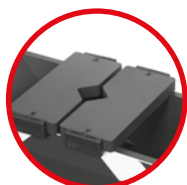
## Desktop press PRS

Welded robust monoblock chassis presses, specially designed to be used on tables and workbenches. Ultra-light for easy transport.

-  Safety overload valve.
-  Hydraulic stroke limiter.
-  Piston with automatic return.
-  Extendable screw for fast and precise approach.



Set of punches. Optional.



Reversible V-blocks with sliding system for secure fastening.

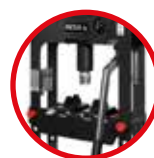
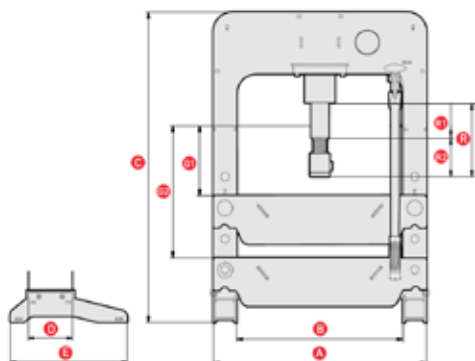


Extendable screw for fast and precise approach to the operating position.

Adjustable workbench at different heights

|                          |              |
|--------------------------|--------------|
| Capacity (t)             | 15           |
| <b>A</b>                 | 550          |
| <b>B</b>                 | 430          |
| <b>C</b>                 | 800          |
| <b>D</b>                 | 132          |
| <b>E</b>                 | 350          |
| <b>G1</b> minimum        | 45           |
| <b>G2</b> maximum        | 338          |
| <b>R1</b> run            | 95           |
| <b>R2</b> spindle stroke | 75           |
| <b>R</b> total run       | 170          |
| Weight (kg)              | 48           |
| References               | <b>PRS15</b> |

Measurements in mm.



AVAILABLE IN GREY



BUREAU VERITAS

CE official certification



Chassis-integrated pressure gauge

Easy access cover for maintenance



**PRS15**

Presses prepared for fixing on the ground.

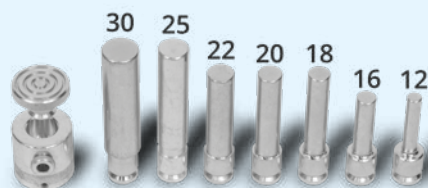


The tray can be placed into the workbench. Designed to collect parts, grease, dirt, etc. Patented.

## Accessories

### Press protection

Available for model PRC (ref. A-5613), models PRD and PRP (ref. A-5612).



Available for all models.

**A-5600:** Set of punches for 30 and 50 t presses. Optional.

**A-5601:** Set of punches for 15 and 20 t presses. Optional.

\* As the cylinders develop more force than the accessories, the punches should never exceed half their nominal force.



Available only for model PRD (ref. A-5609).

**A-5609:** Optional punches tray.

## Lifting tables ME

All models have polyamide wheels for better manoeuvrability, do not damage the garage floor, do not rust and are quiet when operated. The table can be locked at different heights with safety bolts.



Safety overload valve.



Hydraulic stroke limiter.



LCS Lowering Control System.



Operation by the "dead man's" principle.



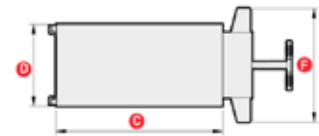
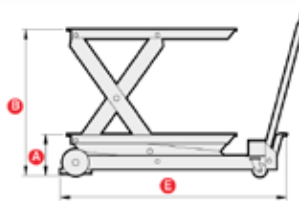
Handle of the **ME-1500** and **ME-2500** models.

| Capacity (kg) | 1500           | 2500           |
|---------------|----------------|----------------|
| <b>A</b>      | 210            | 300            |
| <b>B</b>      | 880            | 880            |
| <b>C</b>      | 1020           | 1060           |
| <b>D</b>      | 500            | 540            |
| <b>E</b>      | 1380           | 1440           |
| <b>F</b>      | 690            | 795            |
| Weight (kg)   | 135            | 187            |
| References    | <b>ME-1500</b> | <b>ME-2500</b> |

Measurements in mm.



**ME-1500**



AVAILABLE IN GREY



The wheels are equipped with brakes and foot protections.

## Pneumatic table for motorcycles PTM

Unique in the market for its high lifting speed (3 to 8 seconds). A safety device allows the table to be locked at different heights and prevents any unexpected descents.



Safety overload valve.



LCS Lowering Control System.

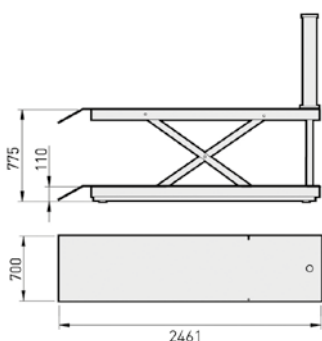


Hydraulic stroke limiter.



Operation by the "dead man's" principle.

Manual control of the descent speed. Supplied with chain for fixing the front wheel. Essential for convenient repair and maintenance of motorbikes.



|               |              |
|---------------|--------------|
| Capacity (kg) | 450          |
| Weight (kg)   | 161,5        |
| Reference     | <b>PTM-2</b> |

Measurements in mm.



AVAILABLE IN GREY



**PTM-2**

Required air pressure: 7-10 bar / 100-145 psi.  
Required air flow: 270 l/min / 9.5 cfm.



## Wheel dolly SCR

Manual support handle to reduce the lifting effort when working at maximum capacity is required. Chain for safe handling of the wheels.



AVAILABLE  
IN GREY



Safety overload valve.



Lowering Control system (LCS).



Hydraulic stroke limiter.



Operation on the "dead man's" principle.

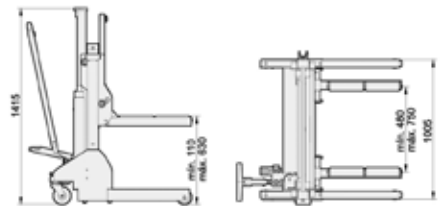
Special design for removal of twin and large size wheels. Each arm has two rollers to allow the truck's twin wheels to turn independently. Lifting arms adjustable in five positions.



Lifting and lowering on the pedal keeps your hands free.

|                       |               |
|-----------------------|---------------|
| Capacity (kg)         | 700           |
| Width between rollers | 480-750       |
| Min. roller height    | 110           |
| Max. elevation        | 630           |
| Weight (kg)           | 152           |
| Reference             | <b>SCR700</b> |

Measurements in mm.



## Transmission jack GCB

Suitable for the assembly of gearboxes, transmissions, engines. It has chains for the safe movement of the load. Equipped with detachable pump, which allows the jack to be used in any position.



AVAILABLE  
IN GREY



**GCB-2**

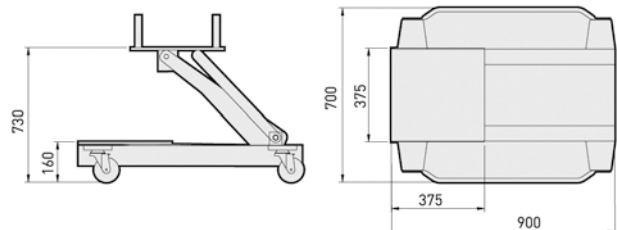


Safety overload valve.



Hydraulic stroke limiter.

|               |              |
|---------------|--------------|
| Capacity (kg) | 1000         |
| Weight (kg)   | 86           |
| Reference     | <b>GCB-2</b> |





## Body repair kits GC

The most complete body repair kit due to its number of accessories.

**Important advantage:** Safer and sturdier thanks to the threaded connections which allow pulling operations, compared with other more extensive but less reliable connection systems in the market which only allow pushing operations. Indispensable for jobs such as body repairs, rescue and roadside service or any other pushing, pulling, separating or lifting applications that require hydraulic force.

**IMPORTANT:** As the cylinders have a greater capacity than the accessories, especially the chain, the separating components, the fixing clamps, tube extension, etc. **they should never exceed half of the rated capacity.**

The maximum capacity of the SH-1 expansion cylinder is 1t and the maximum working load of the chain is 1t. Safety overload valve. Hydraulic stroke limiter. Piston return by internal spring.

**CT-5**  
Pulling cylinder.  
Optional.



**GC-10**

| References   | Mod.  | Cap. (t) | Rec. (mm) |
|--------------|-------|----------|-----------|
| <b>CT-5</b>  | GC-10 | 5        | 138       |
| <b>CT-10</b> | GC-20 | 10       | 138       |



| Capacity (t)      | 10                  | 20                  |
|-------------------|---------------------|---------------------|
| <b>1</b>          | BM-04               | BM-04               |
| <b>2</b>          | CC-10-B             | CC-20-B             |
| <b>3</b>          | GC-10/2272          | A-5167              |
| <b>4</b>          | A-5541              | A-5541              |
| <b>5</b>          | A-5033 / Ø 42 L 700 | A-5233 / Ø 60 L 700 |
| <b>6</b>          | A-5034 / Ø 42 L 480 | A-5234 / Ø 60 L 460 |
| <b>7</b>          | A-5035 / Ø 42 L 230 | A-5235 / Ø 60 L 255 |
| <b>8</b>          | A-5048              | -                   |
| <b>9</b>          | A-5042              | A-5242              |
| <b>10</b>         | A-5038              | A-5238              |
| <b>11</b>         | A-5053              | -                   |
| <b>12</b>         | A-5054              | -                   |
| <b>13</b>         | A-5055              | A-5284*             |
| <b>References</b> | <b>GC-10</b>        | <b>GC-20</b>        |

| Capacity (t)       | 10                  | 20           |
|--------------------|---------------------|--------------|
| <b>14</b>          | A-5050              | A-5280*      |
| <b>15</b>          | A-5039              | A-5239       |
| <b>16</b>          | A-5036 / Ø 42 L 130 | -            |
| <b>17</b>          | A-5049              | -            |
| <b>18</b>          | SH-1                | -            |
| <b>19</b>          | A-5043              | -            |
| <b>20</b>          | A-5086              | -            |
| <b>21</b>          | A-5057              | -            |
| <b>22</b>          | A-5058              | -            |
| <b>23</b>          | A-5056              | -            |
| <b>24</b>          | A-5051              | A-5252*      |
| <b>25</b>          | A-5052              | -            |
| <b>Weight (kg)</b> | <b>41.5</b>         | <b>45</b>    |
| <b>References</b>  | <b>GC-10</b>        | <b>GC-20</b> |

\* These components have a different design from the one shown in the photo.

# Body aligning set EHA

Designed to carry out precise repair of the most badly-damaged cars. The possibility of rotating the arm increases its versatility by allowing to pull from different angles.



AVAILABLE IN GREY



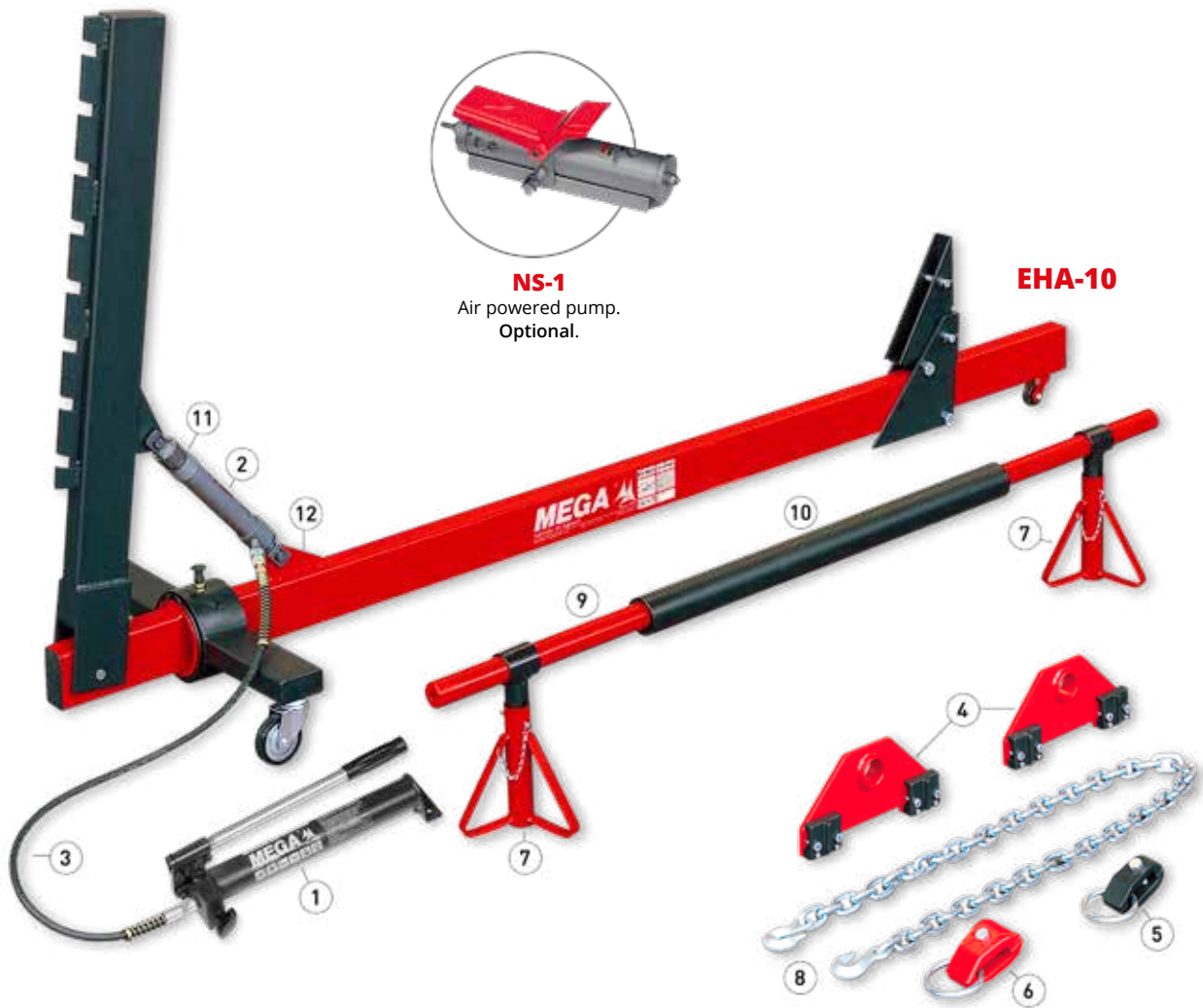
Hydraulic stroke limiter.



Safety overload valve



Piston with automatic return.



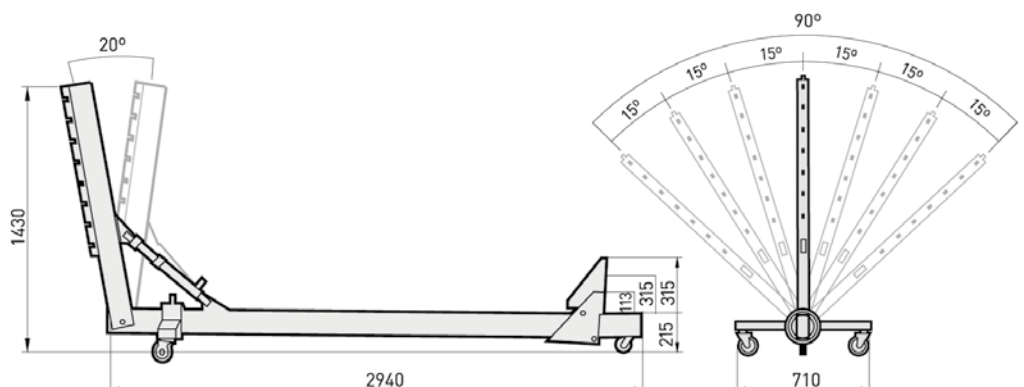
**NS-1**  
Air powered pump.  
Optional.

**EHA-10**

| N°                       | Reference |
|--------------------------|-----------|
| 1                        | BM-04     |
| 2                        | CC-10-B   |
| 3                        | A-5541    |
| 4                        | A-5096    |
| 5                        | A-5095    |
| 6                        | A-5094    |
| 7                        | S-21      |
| 8                        | A-5087    |
| 9                        | A-1512    |
| 10                       | A-1513    |
| 11                       | A-5088    |
| 12                       | A-5089    |
| <b>Capacity (kg) 10</b>  |           |
| <b>Weight (kg) 178.5</b> |           |
| <b>Reference EHA-10</b>  |           |

As an option, it can be equipped with the NS-1 pneumatic pump, with foot pedal, which allows the operator to have his hands free.




**IMPORTANT:** The maximum working load of the chain is 1.4t.





## Hydraulic pipe benders DR

Bending work can be carried out without physical effort thanks to the high force of the hydraulic unit. Fitted with indelibly marked retractable bending frame to facilitate the positioning of the bending supports and pipe. New "V" shape frame design with 90° angle reference, which reduces the hydraulic stroke, and the bending time. For plumbing pipes, DIN 2440 and DIN 2441. They can make angles of up to 180°. They are supplied with a tripod and a swiveling telescopic lever. **DR2:** supplied in a plastic box. **DR3:** supplied in a wooden box.

-  Hydraulic stroke limiter.
-  Safety overload valve.
-  Piston with automatic return.



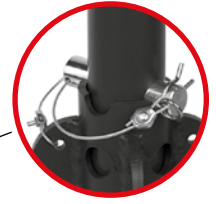
The weight distribution allows easy and comfortable transport.

|              |            |            |
|--------------|------------|------------|
| Capacity (t) | 2"         | 3"         |
| Weight (kg)  | 43         | 86.5       |
| Reference    | <b>DR2</b> | <b>DR3</b> |

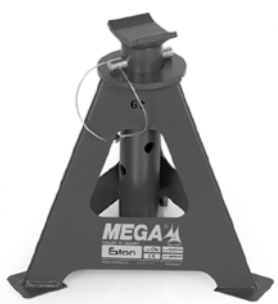
The following sets are supplied:  
**DR2:** 1/2" - 3/4" - 1" - 1 1/4" - 1 1/2" - 2".  
**DR3:** 1/2" - 3/4" - 1" - 1 1/4" - 1 1/2" - 2" - 2 1/2" - 3".

## Axle stands C & S

Axle stands to secure loads as an essential safety measure. High stability and wide support feet to protect the workshop floor. Possibility to lock at different heights.



Pin attached to the base to prevent loss.



**C6**



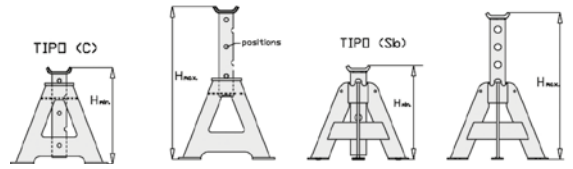
**C10**



**S15B**

| Refs.       | Ch. (t) | H min. | H max. | Posit. | Weight (kg) |
|-------------|---------|--------|--------|--------|-------------|
| <b>C6</b>   | 6       | 360    | 520    | 5      | 6           |
| <b>C10</b>  | 10      | 375    | 550    | 5      | 10.5        |
| <b>S15B</b> | 15      | 340    | 532    | 4      | 9.3         |

Measurements in mm.





## Jack exhibitor

This display facilitates the combined and functional presentation of the most popular bottle and trolley jacks completely removable.



**A-5551L**

## Index of references

| NO.     | DESCRIPTION                   | Pages   |
|---------|-------------------------------|---------|
| A-5204  | EXTENDER                      | 10      |
| A-5205  | EXTENDER                      | 10      |
| A-5206  | EXTENDER                      | 10      |
| A-5211  | EXTENDER                      | 11      |
| A-5212  | EXTENDER                      | 11      |
| A-5298  | LOAD BALANCER                 | 20      |
| A-5551L | COMBINED EXHIBITOR            | 33      |
| A-5600  | SET OF PUNCHES                | 27      |
| A-5601  | SET OF PUNCHES                | 27      |
| A-5609  | LARGE BLACK TRAY              | 27      |
| A-5612  | PROTECTION PRESS PRD-PRP      | 27      |
| A-5613  | PROTECTION PRESS PRB-PRC      | 27      |
| AB-300  | DRUM LIFTING CLAMP            | 20      |
| BR10    | BOTTLE JACK 10T               | 14 - 16 |
| BR20    | BOTTLE JACK 20T               | 15      |
| BR3     | BOTTLE JACK 3T                | 14      |
| BR30    | BOTTLE JACK 30T               | 15      |
| BR40    | BOTTLE JACK 40T               | 15      |
| BR50    | BOTTLE JACK 50T               | 15      |
| BRB20   | AIR HYDRAULIC BOTTLE JACK 20T | 12      |
| BRB30   | AIR HYDRAULIC BOTTLE JACK 30T | 12      |
| BRS10   | LOW PROFILE BOTTLE JACK 10T   | 16      |
| BRS20   | LOW PROFILE BOTTLE JACK 20T   | 16      |
| BRT12   | TELESCOPIC BOTTLE JACK 12T    | 16      |
| BRT20   | TELESCOPIC BOTTLE JACK 20T    | 16      |
| C6      | AXLE STAND 6 TNS              | 32      |
| C10     | AXLE STAND 10 TNS             | 32      |
| CT-5    | PULLING CYLINDER 5T           | 30      |
| CT-10   | PULLING CYLINDER 10T          | 30      |
| CRM30   | HYDRAULIC CRANE 3000KG        | 20      |
| CRP10   | HYDRAULIC CRANE P 1000KG      | 18 - 20 |
| CRP20   | HYDRAULIC CRANE P 2000KG      | 18 - 20 |
| CRV10   | HYDRAULIC CRANE V 1000KG      | 19 - 20 |
| CRV20   | HYDRAULIC CRANE V 2000KG      | 19 - 20 |
| DR2     | PIPE BENDER 2"                | 32      |
| DR3     | PIPE BENDER 3"                | 32      |
| EHA-10  | BODY ALIGNING SET             | 31      |
| GC-10   | BODY REPAIR KIT 10T           | 30      |
| GC-20   | BODY REPAIR KIT 20T           | 30      |
| GCB-2   | TRANSMISSION JACK             | 29      |
| GT2     | TROLLEY JACK 2T               | 7       |
| GT4     | TROLLEY JACK 4T               | 6 - 7   |



| NO.     | DESCRIPTION                       | Pages   |
|---------|-----------------------------------|---------|
| GT2S    | TROLLEY JACK 2T SECURITY          | 7       |
| GT2X    | ULTRA-LOW PROFILE TROLLEY JACK    | 7       |
| GT3     | TROLLEY JACK 3T                   | 6 - 7   |
| K100    | HYDRAULIC PRESS 100T              | 26      |
| K100E   | ELECTRIC HYDRAULIC PRESS 100T     | 26      |
| ME-1500 | LIFTING TABLE 1500KG              | 28      |
| ME-2500 | LIFTING TABLE 2500KG              | 28      |
| MGD-100 | BOTTLE JACK 100T                  | 15      |
| MGL10   | TOE JACK                          | 16      |
| N10-3   | AIR HYDRAULIC JACK 10-20-35T      | 10 - 11 |
| N15-2   | AIR HYDRAULIC JACK 15-30T         | 10 - 11 |
| N15-2B  | AIR HYDRAULIC JACK 15-30T         | 10 - 11 |
| N15-4   | AIR HYDRAULIC JACK 15-30-50-80T   | 10 - 11 |
| N20-3   | AIR HYDRAULIC JACK 20-35-65T      | 10 - 11 |
| N25     | AIR HYDRAULIC JACK 25T            | 10 - 11 |
| NP15-2B | AIR HYDRAULIC JACK PORTAB. 15-30T | 11-12   |
| NS-1    | AIR PUMP 0.5L                     | 31      |
| PF350   | TILTING PLATFORM                  | 21      |
| PRB30   | WORKSHOP COLUMN PRESS 30T         | 22      |
| PRC30   | COMPACT PRESS W. CYLINDER 30T     | 23      |
| PRC30NF | COMPACT AIR HYDRA. PRESS 30T      | 23      |
| PRC50   | COMPACT PRESS W. CYLINDER 50T     | 23      |
| PRC50NF | COMPACT AIR HYDRA. PRESS 50T      | 23      |
| PRD30   | MOBILE CYL. PRESS 30T             | 24      |
| PRD30NF | MOBILE CYL. AIR HYDR. PRESS 30T   | 24      |
| PRD50   | MOBILE CYL. PRESS 50T             | 24      |
| PRD50NF | MOBILE CYL. AIR HYDRA. PRESS 50T  | 24      |
| PRP50   | AIR HYDR. PREMIUM PRESS 50T       | 25      |
| PRS15   | DESKTOP PRESS 15T                 | 27      |
| PTM-2   | PNEUMATIC PLATFORM. MOTORCYCLE    | 28      |
| S15B    | AXLE STAND S15B                   | 32      |
| SCR700  | WHEEL DOLLY 700KG                 | 29      |
| T10     | HEAVY DUTY TROLLEY JACK 10T       | 8       |
| T12     | HEAVY DUTY TROLLEY JACK 12T       | 8       |
| T15     | HEAVY DUTY TROLLEY JACK 15T       | 8       |
| T20     | HEAVY DUTY TROLLEY JACK 20T       | 8       |
| T6      | HEAVY DUTY TROLLEY JACK 6T        | 8       |
| TRS1200 | HIGH LIFT TRANSM. JACK 1200KG     | 21      |
| TRS300  | HIGH LIFT TRANSM. JACK 300KG      | 21      |
| TRS750  | HIGH LIFT TRANSM. 750KG           | 21      |



MEGA X





Blank lined writing area consisting of 20 horizontal grey lines.





**MEGA** 

**NEW MEGA XXI, S.L.**

Polígono Industrial Eitua, 6  
48240 BERRIZ ( VIZCAYA ) SPAIN  
Tel.: + 34 94 622 50 90  
Fax.: + 34 94 622 52 78 / export@mega.es

**[www.mega.es](http://www.mega.es)**